

additional informations:
 filter colour : impregnated
 filter weight : 160kg

label:

VLT MCC 101 sine wave FILTER
 www.danfoss.com

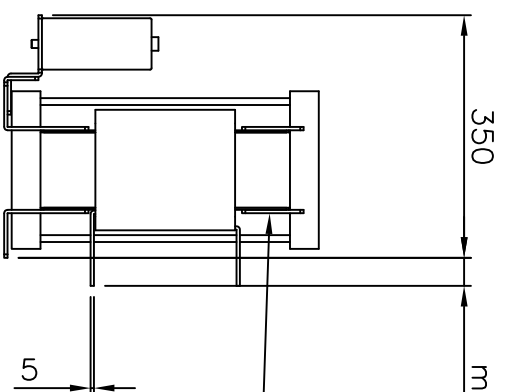
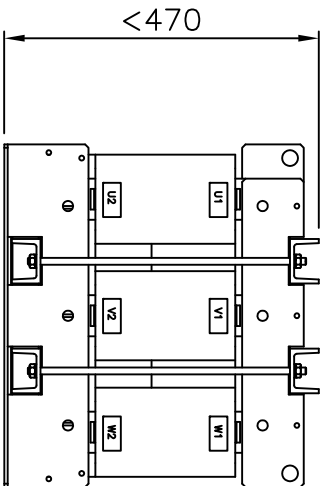
TS: MCC101A4587E008
 PN: 130B4121
 3x 525-600V / 5000Hz (max. 100kV)
 3x 165A@60Hz 156A@50Hz 124A@100Hz
 Chassis/FPO Term: 45°C/115°
 130B4121000168-180

Use only with a type 1 or type 2 3FC0www.voltage control device

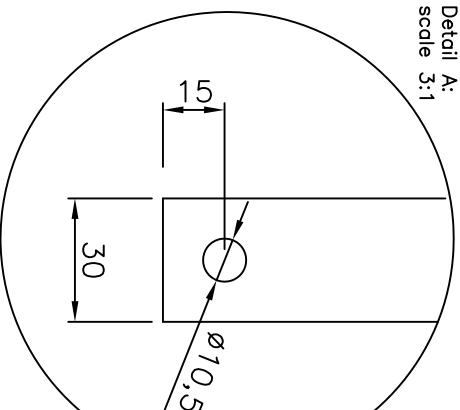
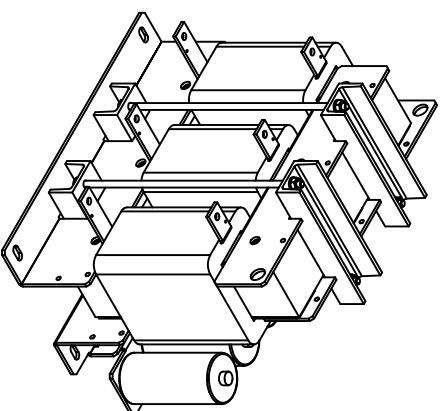
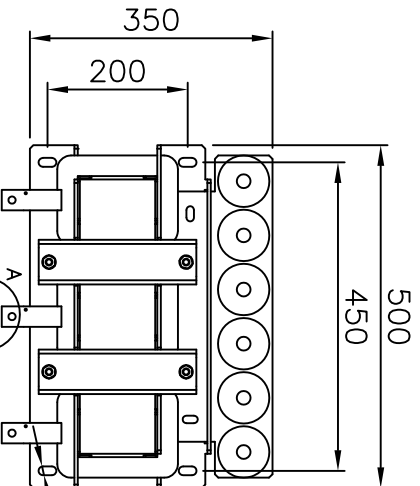
E 210022
 EN 1002054
 FAIR™ 000006
 EN 61598

MADE IN GERMANY
 C-666F
 Phase: 24kV
 Type: 1500A
 Terminal: 18mm

CE



Detail A:
 scale 3:1



d 08.05.16	Schr./Fle.	typelabel updated Danfoss Postaddress included
c 22.12.14	Schr./Fle.	typelabel updated cap. connectors changed to bolt
b 11.03.13	Schr./Kor.	typelabel updated
a 01.10.10	KOR/ Lauer	approval added
date	name	amendment

Dimensions toleranced according to ISO 2768-m					
Tolerance class	0,5	from 3	from 6	from 30	from 120
	to 3	to 6	to 30	to 120	to 400
m (middle)	±0.1	±0.1	±0.2	±0.3	±0.5
				±0.5	±0.8

drawn	01.06.10	Kornau	Kornau	scale /	Dimensions B 1002054		
checked	01.06.10	Bremer	Bremer	format	sine-wave filter 690V 165A – IP00		
date		name	signature	A4	order number	drawing number	modi.
					130B4121	Z791004014	d
				DIN ISO 5456	Please observe protection clause to ISO 16016		
				all dimensions mm			

F 1 2 3 4 5 6 7 8